

**Original Article**

## Effect of Intracanal Glass-Ionomer Barrier Thickness on Microleakage in Coronal Part of Root in Endodontically Treated Teeth: An In Vitro Study

Armaghan Alikhani<sup>1</sup>, Maryam Babaahmadi<sup>2</sup>, Najme Etemadi<sup>3</sup><sup>1</sup> Dept. of Operative Dentistry, School of Dentistry, Ahvaz University of Medical Sciences, Iran.<sup>2</sup> Dentist, School of Dentistry, Ahvaz University of Medical Sciences, Iran.<sup>3</sup> Resident of Operative Dentistry, School of Dentistry, Ahvaz University of Medical Sciences, Iran.**KEY WORDS**Endodontically treated teeth;  
Coronal microleakage;  
Glass-ionomer thickness;Received;  
Received in Revised form;  
Accepted;**ABSTRACT**

**Statement of the Problem:** The most common cause of endodontic treatment failures is improper coronal sealing. Therefore, besides to proper root sealing, coronal sealing which is supported by a proper restoration has a major role in endodontic treatment success, and coronal microleakage should be considered as an etiologic factor in endodontic treatment failure. Infact this leakage shows its affect by penetration through the coronal part of root canal, therefore the aim of this study was to evaluate the effect of glass-ionomer (GI) thickness as a coronal barrier on microleakage after endodontic treatment.

**Purpose:** This study aimed to evaluate the coronal microleakage in GI-obtured root canals in endodontically treated teeth using different thicknesses of GI.

**Materials and Method:** Forty-five single-rooted extracted human teeth with single canals were collected and disinfected with 0.5% chloramine solution. Endodontic treatment was undertaken and the teeth were divided into 3 groups: group 1: 1 mm of gutta-percha, group 2: 2 mm of gutta-percha and group 3: 3 mm of gutta-percha was removed and GI respectively was replaced at 1-, 2- and 3-mm thicknesses. Then subgroups were placed in methylene blue dye and the microleakage was assessed using dye penetration.

**Results:** The mean dye penetration in groups 1, 2 and 3 were 5.1, 3.7 and 2.9, respectively, with statistically significant differences. Group 1 exhibited the highest amount of dye penetration while group 3 showed the least one. Also comparisons between groups showed a significant difference between groups 1 and 2 in mean dye penetration ( $p=0.002$ ) but this was not significant between groups 2 and 3 ( $p=0.098$ ).

**Conclusion:** The results of the present study indicated that a thicker GI layer might be associated with a decrease in coronal microleakage. Although the results showed that GI at 3-mm thickness resulted in the best protective effect on coronal microleakage in endodontically treated teeth, further studies are needed to confirm these results.

**Corresponding Author:** Etemadi N., Dept. of Restorative Dentistry, School of Dentistry, Ahvaz University of Medical Sciences, Iran. Email: setare1989@yahoo.com Tel: +98-9367864718

Cite this article as:

**Introduction**

Root canal contamination is usually prevented by a crown restoration. Coronal microleakage is considered as a major factor related to endodontic treatment failure. Currently, more attention is paid to the quality of the

final restoration [1]. One of the most important techniques to prevent penetration of microorganisms and saliva into the root canal is the sealing of cavity access [2]. Moreover, researchers have shown that endodontic treatment of teeth exhibits a higher failure rate when

coronal sealing is not appropriate [3]. The most common coronal sealers include mineral trioxide aggregate (MTA), Cavit, Zinc oxide cement based on mixture of eugenol and ethoxy benzoic acid (Super-EBA), composite resin, amalgam, glass-ionomer cement (GIC) and intermediate restorative material [4]. GICs are one of the most common restorative materials that are widely used in dentistry. Its ingredients include strontium aluminosilicate glass powder (base), calcium and a water-soluble polymer (acid) [5]. GICs are generated from reaction of weak polymeric acids with powdered glasses. An important clinical advantage of GIs is their adhesion to the surface of the tooth. Adhesion helps the retention of GICs in the tooth and results in less marginal leakage [6]. GIs have some properties, including the following. They have a triple cure and setting that improves the quality of polymerization and decreases microleakage. Water sorption in GI restorations can decrease intervals between tooth edges and therefore can show a low microleakage rate in comparison with composite resins [7]. Use of unfilled resin on the restoration can improve GI properties due to a decrease in its dehydration and results in a decrease in microleakage [8]. Kolahdozan *et al.* [9] showed that coronal microleakage with the use of GI was lower than that with other materials, but the differences were not significant.

According to benefits of GI as a restorative material which is used in sealing of coronal part of root canals in endodontically treated teeth, one of the major issues with the use of GI is determining its optimum thickness. The aim of this study was to consider compare the effects of different GI thicknesses on microleakage in endodontically treated teeth.

## Materials and Method

### Preparation of teeth

In this study, 45 single-rooted human teeth were used. The teeth had been extracted for orthodontic or periodontal reasons. The surface of each tooth was cleaned with a Gracey curette. The teeth were stored in 0.9% saline solution at 4°C until used for the purpose of the study.

All the root canals were prepared by crown-down technique up to #40 master apical file. The root canals were obturated with lateral compaction technique using zinc oxide sealer (Golchi, Iran), eugenol (Gordab chime

Gmbh, Germany) and gutta-percha (Gapadent, Germany). The samples were sectioned with a diamond saw (Blade XL 12205, 200rpm, Extec Corp, Enfield, CT, USA) 2mm coronal to the cemento-enamel junction. The samples were divided into three groups based on different glass-ionomer thicknesses.

Group 1: 1 mm of GI was used as coronal barrier.

Group 2: 2 mm of GI was used as coronal barrier.

Group 3: 3 mm of GI was used as coronal barrier.

In this study we used light-cured GI (GG Fuji, Japan) by a dycal applicator (Dentsply, Sirona, USA) filling the coronal part of the root canal from the base which gutta percha was removed to the orifice. Light-curing was carried out for 20 seconds (800mw/cm<sup>2</sup>) (LED light curing unit, DEMI, Kerr, Ca, USA).

The samples were stored in normal saline solution at room temperature for 24 hours. Then the tooth apices were coated with sticky wax. After that, except the apex, all the tooth surfaces up to CEJ were coated with two layers of nail varnish. All the teeth were immersed in 2% methylene blue solution for 24 hours. The samples were sectioned sagittally with an automatic cutter (Sruers, Denmark). Finally, dye penetration was assessed under a 40× stereomicroscope (Bel MicroImage Analyzer, Bel Photonics, Monza, Italy). Two independent observers evaluated the teeth and dye penetration was scored.

The scoring was carried out as follows:

0: No dye penetration.

1: Dye penetration was less than a half of the thickness of light-cured GI.

2: Dye penetration was more than half of the thickness of light-cured GI but did not reach gutta-percha.

3: Dye penetration reached gutta-percha.

### Statistical analysis

To compare the means of microleakage in different groups, in the cases with normal distribution, if the variance was the same we used ANOVA and if not Welch test was performed. However, in cases in which data were not distributed normally Kruskal-Wallis test was used. The significance level was set at  $p = 0.05$ .

## Results

Two independent observers evaluated coronal microleakage. First we analyzed the inter-observer agreement. The results showed a kappa coefficient of 0.83% and  $p <$

**Table 1: Inter-observer agreement**

|                      | Value | Asymp. Std. Errora | Approx. Tb | Approx. Sig. |      |
|----------------------|-------|--------------------|------------|--------------|------|
| Measure of Agreement | Kappa | .836               | .070       | 8.500        | .000 |
| No. of Valid Cases   | 45    |                    |            |              |      |

**Table 2: Coronal microleakage on the buccal and lingual surfaces in different groups**

| Group   | Dye penetration score | Lingual    | Buccal    |
|---------|-----------------------|------------|-----------|
| Group 1 | 0                     | 0          | 1 (6.7%)  |
|         | 1                     | 1 (6.7%)   | 0         |
|         | 2                     | 3 (20%)    | 5 (33.3%) |
|         | 3                     | 11 (73.3%) | 9 (60%)   |
| Group 2 | 0                     | 1 (6.7%)   | 0         |
|         | 1                     | 2 (13.3%)  | 5 (33.3%) |
|         | 2                     | 8 (53.3%)  | 9 (60%)   |
|         | 3                     | 4 (26.4%)  | 1 (6.7%)  |
| Group 3 | 0                     | 3 (20%)    | 1 (6.7%)  |
|         | 1                     | 6 (40%)    | 6 (40%)   |
|         | 2                     | 5 (33.3%)  | 5 (33.3%) |
|         | 3                     | 1 (6.7%)   | 3 (20%)   |

**Table 3: Comparison of dye penetration in different groups**

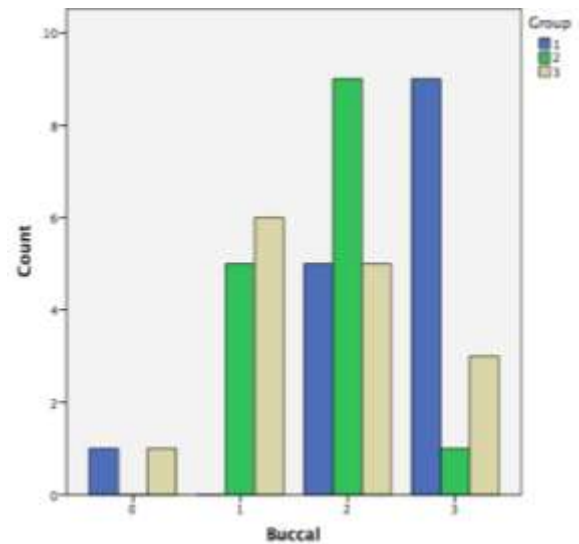
| Variable     | Mean     |
|--------------|----------|
| Group 1 1 mm | 5.133333 |
| Group 2 2 mm | 3.733333 |
| Group 3 3 mm | 2.933333 |

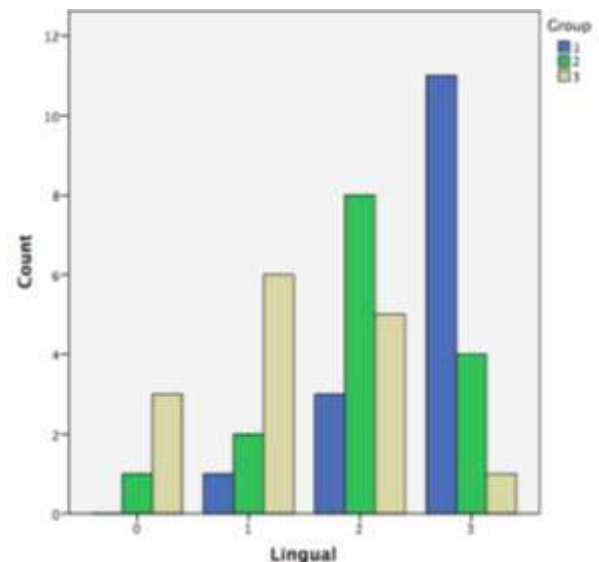
| Comparison        | p Value  |
|-------------------|----------|
| Group 1& Group 2  | p= 0.002 |
| Group 1& Group 3  | p< 0.001 |
| Group 2 & Group 3 | p= 0.098 |

0.001 (Table 1). Given a favorable level of agreement between the observers we used the reports of observer #1. The descriptive findings are summarized in Table 2.

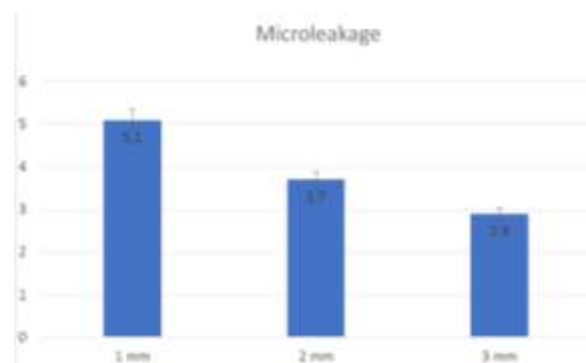
Table 3 shows that the means of dye penetration in groups 1, 2 and 3 were 5.1, 3.7 and 2.9, respectively, with significant differences between the groups. Group 1 exhibited the highest amount of dye penetration while group 3 showed the least (Figures 1 and 2). In addition, comparisons between the groups showed that the means of dye penetration were significantly different between



**Figure 1: Microleakage score on the buccal surface**



**Figure 2: Microleakage score on the lingual surface.**



**Figure 3: Comparison of coronal microleakage between the groups.**

groups 1 and 2 ( $p= 0.002$ ) but the difference was not significant between groups 2 and 3 ( $p= 0.098$ ) (Figure 3).

## Discussion

GIC have many advantages, including chemicomechanical dentin bonding, fluoride release and thermal expansion like that of tooth structure. GIs are used in the sandwich technique, for coronal sealing and as a coronal barrier during internal bleaching. Therefore, their important usage is to prevent microleakage [10]. One of the most important concerns in using GIs is to determine the optimal thickness for effective prevention of microleakage. Therefore, the aim of this study was to evaluate microleakage in three different thicknesses of GI using dye penetration technique.

Our findings showed that the mean dye penetration scores in groups 1, 2 and 3 were 5.1, 3.7 and 2.9, respectively, with significant differences between the groups. Group 1 showed the highest amount of dye penetration while group 3 showed the least. In addition, comparisons between the groups showed that the mean dye penetration scores were significantly different between groups 1 and 2 ( $p=0.002$ ); however, the difference was not significant between groups 2 and 3 ( $p=0.098$ ). The results not only showed that GIs can effectively prevent coronal microleakage but also the thickness of GI is vitally important for the success of treatment. A thickness of 1 mm was the least effective in preventing microleakage; a 2-mm thickness was as effective as the 3-mm thickness in protecting the buccal surface but not the lingual surface. Therefore, to achieve the most effective protective role of GI a 3-mm thickness should be used.

To the best of our knowledge, the present study for the first time compared the effect of different GI thicknesses on coronal microleakage. However, many studies have compared the effect of GI with those of other materials such as composite resin on preventing microleakage. Sherwood *et al.* (2004) [11] showed that at least a 4-mm thickness of glass-ionomer is needed when 30%  $H_2O_2$  is used for bleaching. In addition, Diwanji *et al.* [12] compared microleakage with the use of three different GI products. The teeth were placed in acridine dye and a thermocycler and were sectioned after 24 hours. The highest microleakage was seen with Fuji IX GI, followed by LC II; the lowest microleakage was seen using KN 100 GI. Moreover, Kollahdozan *et al.* (2012) [9] showed that microleakage with the use of GI was lower than that with other materials, but the differ-

ences were not significant. Damman *et al.* [13] evaluated the effect of glass-ionomer and composite resin, with and without using 1-mm thickness of Coltosol, on microleakage in endodontically treated teeth. In their study, after endodontic treatment 1 mm of gutta-percha was removed from the root canal and replaced with a different sealer. Finally, no sealer was able to fully prevent microleakage but Coltosol + composite resin, composite resin and Coltosol + Vidrion R were significantly more effective in sealing than GI. Our findings were also consistent with those reported by Damman *et al.*, who showed that GI with a thickness of 1 mm exhibited low ability to prevent coronal microleakage. Shetty *et al.* [14] compared the sealing abilities of composite resin, type II GI, amalgam and Ketac Molar in endodontically treated teeth. In this study 3 mm of gutta-percha was removed and replaced with different sealers. The results showed that GI with a 3-mm thickness resulted in more microleakage compared to composite resin and amalgam but lower than Ketac Molar. In the study above, the teeth were immersed in 2% methylene blue to evaluate dye penetration. However, we immersed the teeth for only 24 hours. Therefore, it seems that in the long-time exposure, GI has lower resistance to dye penetration than amalgam and composite resin. Finally, Barekatin *et al.* [15] compared the sealing ability of two different composite resins and resin-modified glass-ionomer (RMGI) as intra-orifice barriers. They used a 3-mm thickness and showed that microleakage in GI and composite resin was 0.945 mm and 0.641 mm, respectively, with no significant difference. In that study, the teeth were immersed in methylene blue for 48 hours, twice that in our study. Another difference was related to the report system; Barekatin *et al.* reported the results quantitatively while we reported them qualitatively.

## Conclusion

According to the results of the present study, using the higher thickness of GI might decrease coronal microleakage. Overall, our findings indicated that GI in 3-mm thickness showed the highest preventive effect on coronal microleakage in endodontically treated teeth.

## Acknowledgements

We wish to thank all our colleagues in the Faculty of

Dentistry, Ahwaz, Iran.

### Conflict of Interest

The authors declare that they have no conflict of interests.

### References

1. Ravanshad S, Ghoreeshi N. An In Vitro Study Of Coronal Microleakage In Endodontically-Treated Teeth Restored With Posts. *Australian Endodontic Journal*. 2003 Dec 1; 29(3):128-33.
2. Damman D, Grazziotin-Soares R, Farina AP, Cecchin D. Coronal microleakage of restorations with or without cervical barrier in root-filled teeth. *Revista Odonto Ciênc*. 2012; 27(3):208-12.
3. Parolia A, Kundabala M, Acharya SR, Saraswathi V, Ballal V, Mohan M. Sealing Ability of Four Materials in the Orifice of Root Canal Systems Obturated With Gutta-Percha. *Endodontology*. 2008; 20(2):65-70.
4. Elemam RF, Majid ZS. Critical Review on Glass Ionomer Seal under Composite Resin of Obturated Root Canals. *International Journal of Contemporary Medical Research*. <https://www.researchgate.net/publication/307466209>
5. Nagaraja Upadhya P, Kishore G. Glass ionomer cement: the different generations. *Trends Biomater Artif Organs*. 2005; 18(2):158-65.
6. Sidhu SK, Nicholson JW. A review of glass-ionomer cements for clinical dentistry. *Journal of Functional Biomaterials*. 2016 Jun 28;7. pii: E16. doi: 10.3390/jfb7030016.
7. Yazici AR, Celik C, Özgünlaltay G, Dayangaç B. Bond strength of different adhesive systems to dental hard tissues. *Operative Dentistry*. 2007 Mar; 32(2):166-72.
8. Brackett WW, Gunnin TD, Gilpatrick RO, Browning WD. Microleakage of class V compomer and light-cured glass ionomer restorations. *The Journal of prosthetic dentistry*. 1998 Mar 31; 79(3):261-3.
9. Kolahduzan AR, Abbasi M, Rezai N, Araghi S, Esmaeili SH. Comparison of coronal microleakage of canals filled with gutta percha and resilon with a glass ionomer coronal barrier. *JIDAI Spring* 2014; 26(1):18-23.
10. P. C. V. Yamazaki, A. K. B. Bedran-Russo, P. N. R. Pereira. Microleakage evaluation of a new low-shrinkage composite restorative material. *J Operative Dentistry* Nov 2006; 31(6):670-676.
11. Sherwood AL, Miglani RS, Lakshminarayanan L. Efficacy of glass ionomer as a barrier material in non-vital bleaching – A stereomicroscopic study. *J Endod* January 2004; 16:12-15.
12. Diwanji A, Dhar V, Arora R, Madhusudan A, Rathore AS. Comparative evaluation of microleakage of three restorative glass ionomer cements: An in vitro study. *Journal of Natural Science, Biology and Medicine*. 2014 Jul 1; 5(2):373-377.
13. Damman D, Grazziotin-Soares R, Farina AP, Cecchin D. Coronal microleakage of restorations with or without cervical barrier in root-filled teeth. *Revista Odonto Ciênc*. 2012; 27(3):208-12.
14. Shetty K, Habib VA, Shetty SV, Khed JN, Prabhu VD. An assessment of coronal leakage of permanent filling materials in endodontically treated teeth: An in vitro study. *Journal of pharmacy & bioallied sciences*. 2015 Aug; 7 (Suppl 2): S607–S611.
15. Barekataan M, Jahromi MZ, Habibagahi S. Comparison of coronal microleakage of resin modified glass ionomer and composite resin as intra-orifice barriers in internal bleaching. *Caspian Journal of Dental Research*. 2016 Jan 1; 5 (1):8-13.